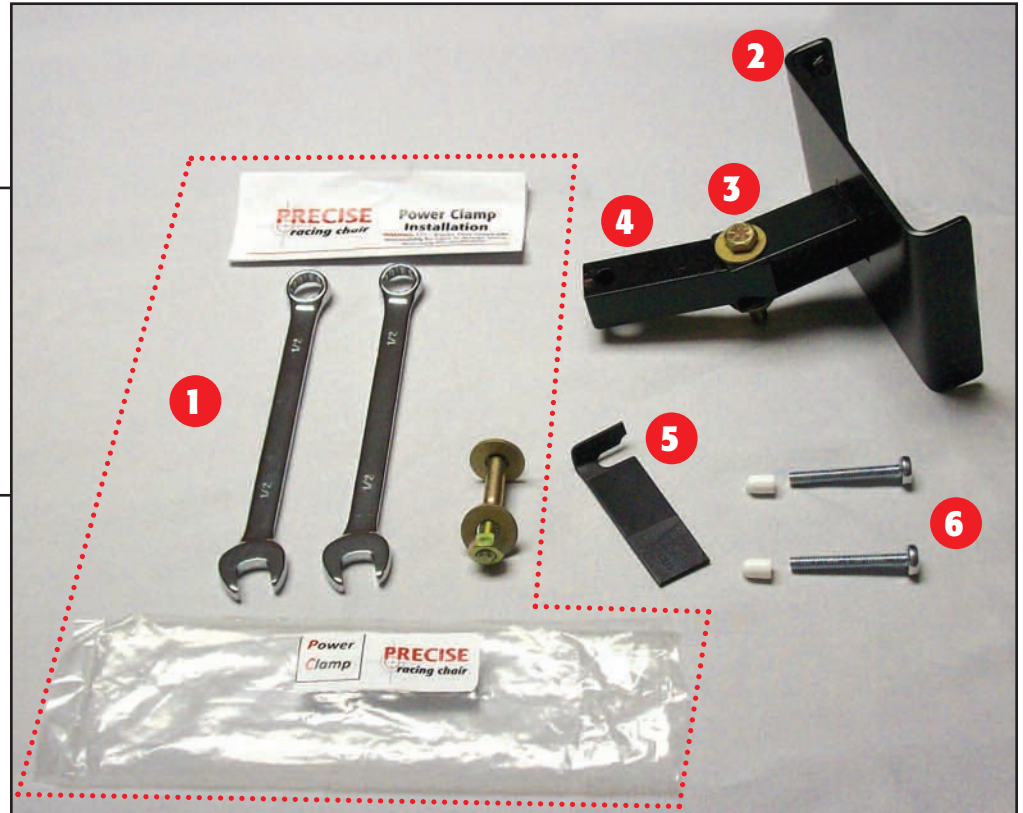


Adapter for Xbox 360 Wireless Racing Wheel: Congratulations on your purchase of the best accessory for your Xbox 360 Wireless Racing Wheel!

Included in this package are the following components:

1. Power Clamp complete
2. Adapter base
3. Power clamp bolt assembly
4. Black metal extender
5. Thread
6. Phillips head bolt



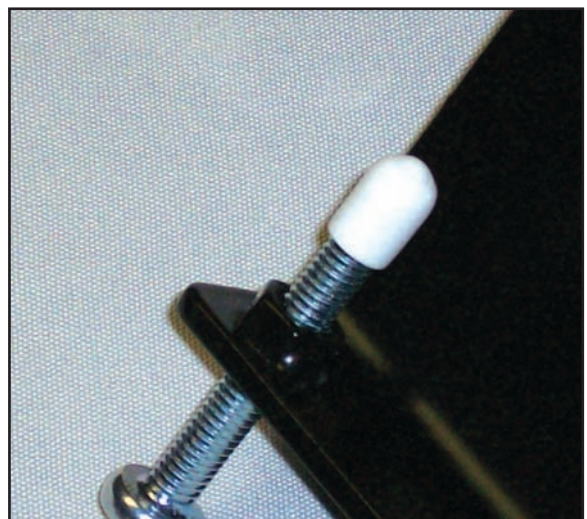
Step 1:

Assemble the Phillips head bolts into the adapter base, leaving about 3/4" of exposed threads as shown below:



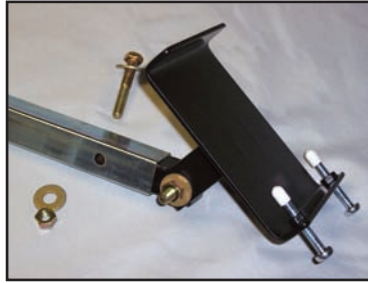
Step 2:

Apply the thread protectors to the end of the Phillips head screws:



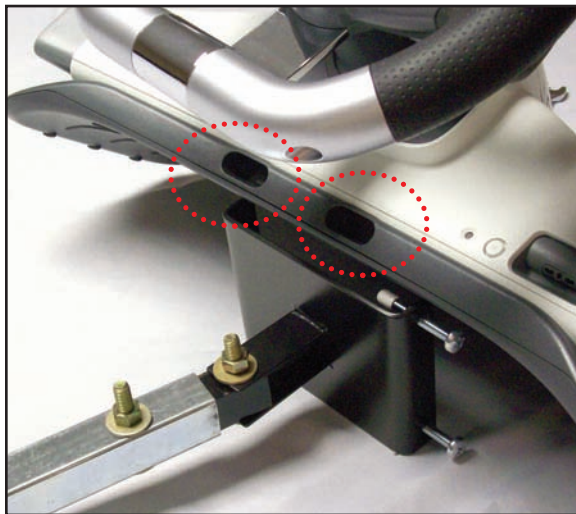
Step 3:

Remove the silver tube from the standard wheel mount bracket that came with your Precise Racing Chair. Using the power clamp bolt assembly, complete the assembly of the silver tube to the adapter:



Step 4:

The bolt and thread protectors are going to go into these openings in your Xbox Wireless racing wheel:



Step 5:

Position the completed adapter and silver tube assembly like this, then rotate the assembly:



Step 6:

Tighten the threaded bolts by hand, you can tighten them more later if required.

Install the completed wheel and mounting assembly into the black T bar assembly and complete the rest of the set up instruction as found in the directions accompanying your Precise Racing Chair.

